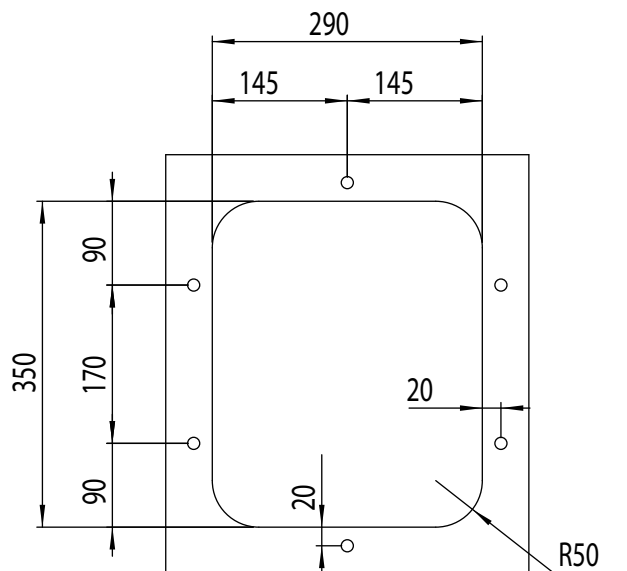
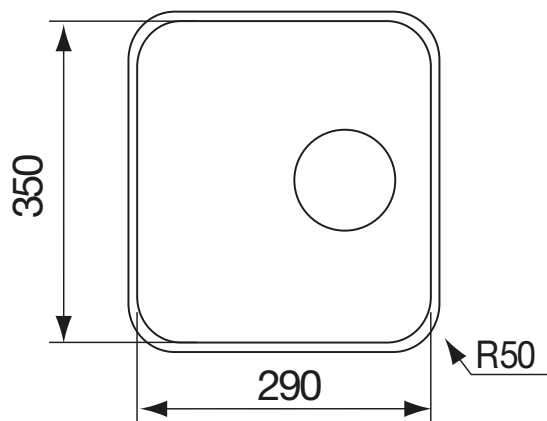


INSTALLAZIONE: Sottotop

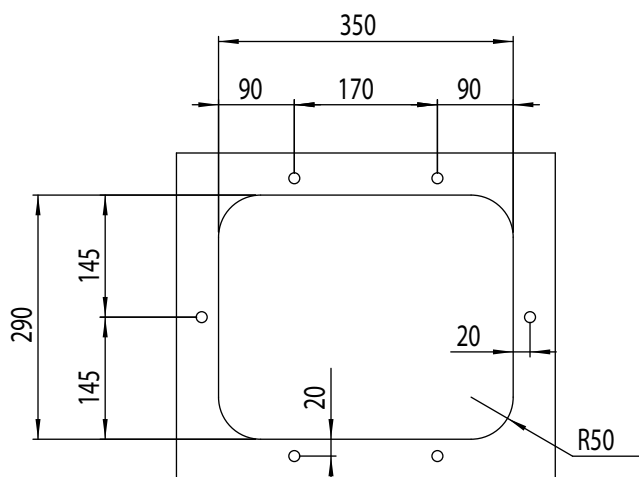
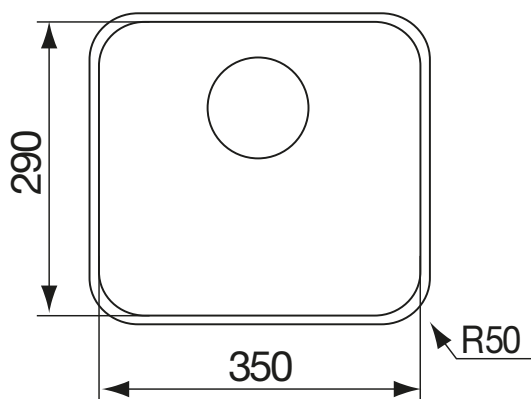
MODELLO: CINZIA SOTTOTOP

| | | | |
|-------------|-----|--|--|
| 35 x 29 R50 | (1) | Base 450 Foro sottotop: 350 x 290 R50 | Base 450 Undertop hole: 350 x 290 R50 |
| 35 x 29 R50 | (2) | Base 500 Foro sottotop: 350 x 290 R50 | Base 500 Undertop hole: 350 x 290 R50 |

(1)



(2)



N° 6 fori \varnothing 13 mm profondità 15 mm

6 holes, each \varnothing mm 13 depth 15